

Managing Workers' Compensation

Experience and results

Choosing CHA gives you a partner with the experience to improve your workers' compensation metrics. Using our internally tested protocols and processes, we can make your workers' compensation care, cost and overall strategy more effective for your company.

Why are we so confident?

In addition to assisting clients, we also manage workers' compensation for our own employees.

CHA has 4,500 staff working in all aspects of health care services, hospital operations and facility management. This has given us years of experience overseeing the full continuum of workers' compensation care. The same physicians, nurses and case managers that make our internal efforts so successful are the same personnel available to you and your employees.

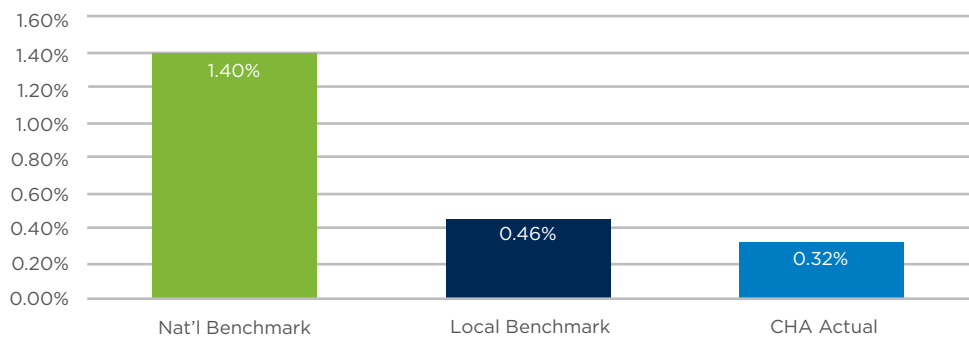
Measuring success

There are many ways to measure the effectiveness of a workers' compensation program. Below are two key metrics we use to track our program quality with CHA employees.

1. Financial Success

CHA continually benchmarks well when focused on the total dollars paid out in comparison to total employee payroll.

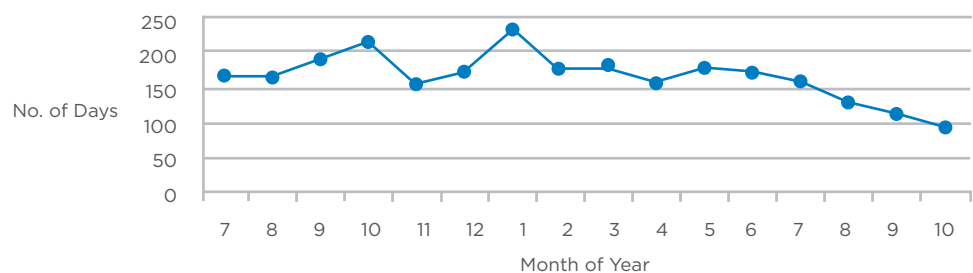
Workers' Comp Cost as a Percentage of Payroll - FY14



2. Flexible Strategies that Maintain Productivity

CHA has the ability to be agile and adjust case management strategies when a key metric like Lost Work Days begins to trend in the wrong direction.

Lost Work Days FY 15 - Current



AFFILIATED WITH

