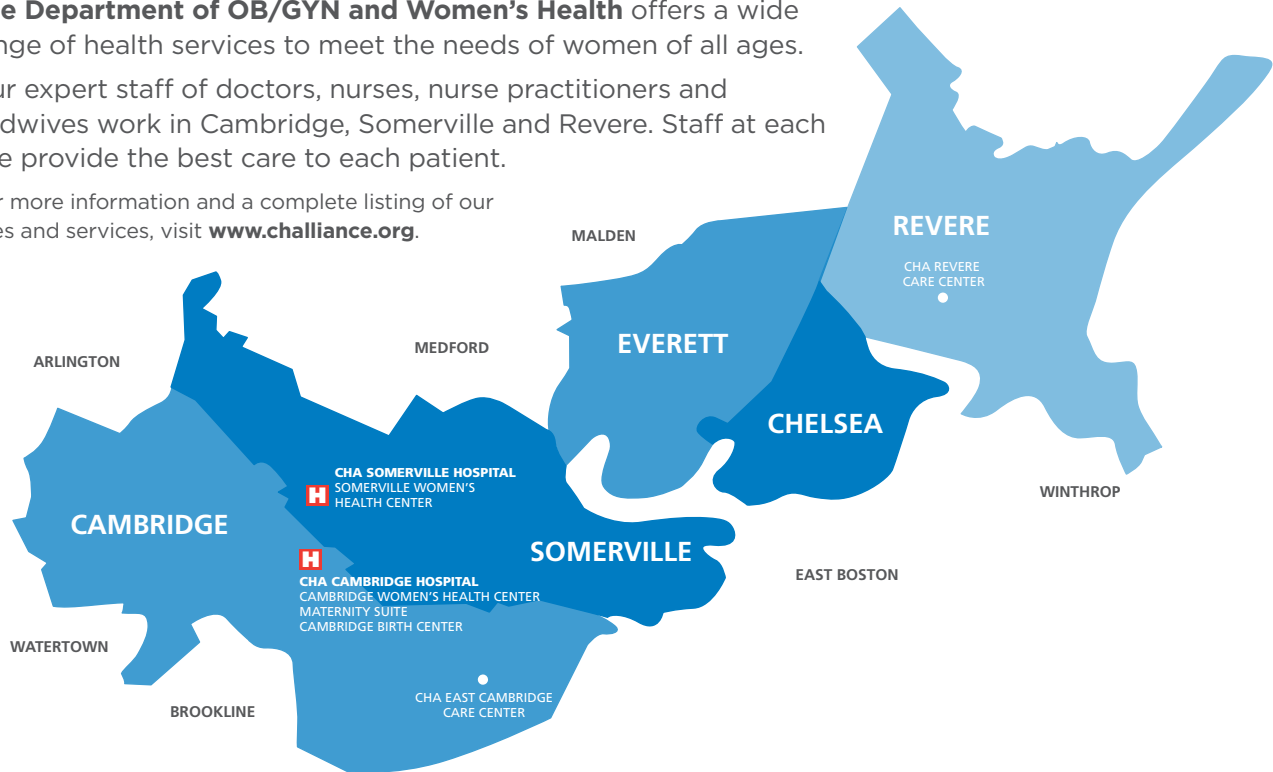


OB/GYN & Women's Health Locations

The Department of OB/GYN and Women's Health offers a wide range of health services to meet the needs of women of all ages. Our expert staff of doctors, nurses, nurse practitioners and midwives work in Cambridge, Somerville and Revere. Staff at each site provide the best care to each patient.

For more information and a complete listing of our sites and services, visit www.challiance.org.



Cambridge

CHA Cambridge Hospital
1493 Cambridge Street
Cambridge, MA 02139

**CHA Women's Health
Cambridge Hospital**
Healy Building
3rd Floor
617-665-2800

SERVICES: Obstetrical/Midwifery care, gynecological services, family planning, women's mental health

Maternity Suite

SERVICES: Labor, delivery, post-partum, nursery

Cambridge Birth Center
617-665-2229

SERVICES: Labor, delivery, post-partum midwifery care, routine gynecological services, family planning

Somerville

CHA Somerville Hospital
230 Highland Ave
Somerville, MA 02143

**CHA Women's Health
Somerville Hospital**
South Building, 5th Floor
617-591-4800

SERVICES: Obstetrical/Midwifery care, gynecological services, family planning, women's mental health

Health Centers with Dept. of OB/GYN Providers*

**CHA Primary Care
East Cambridge Care Center**
163 Gore Street
Cambridge, MA 02139
617-665-3000

SERVICES: Obstetrical/Midwifery care, gynecological services, family planning, adult and pediatric primary care

**CHA Women's Health
Revere Care Center**
454 Broadway
Revere, MA 02151
781-485-8200

SERVICES: Obstetrical/Midwifery care, gynecological services, family planning, adult and pediatric primary care

*CHA has Family Medicine providers who offer obstetrical and routine gynecological care, as well as primary care services. CHA also provides teen health services at our Cambridge Rindge and Latin School, Somerville High School and Everett High School health centers.



AFFILIATED WITH

