



# CHA Regional Wellbeing Report:

## A Community Health Needs Assessment

### Assessment Areas

This assessment examines the strengths and challenges of the community, with the purpose of taking action to positively change the factors that influence people's health.



**Social and Cultural Environment**



**Natural and Built Environment**



**Economic and Educational Environment**



**Healthcare and Health Outcomes**

### Data Collection

The focus groups and in-depth interviews elevated the experiences and knowledge of those who are most directly impacted by health equity issues or are involved in addressing equity concerns facing their communities.



644  
Survey Participants



105  
Focus Group Participants

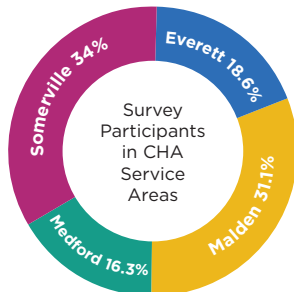


23  
In-Depth Interviews

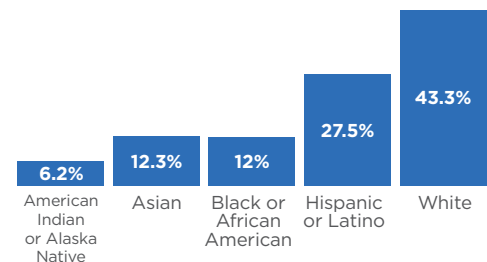


40+  
Secondary Data Sources

### Survey Participants



- 49% Speak a language other than English at Home
- 30+ ethnicities represented among Survey Participants
- 19% Identify as Gay, Lesbian, Bisexual, or a Self-described Sexual Orientation



### What's Next

We will work to develop or support policies and practices that foster and promote 3 equity principles in 4 focus areas.

#### Equity Principles

- Language justice
- Inclusion of under-represented voices in leadership and decision-making
- Environments that acknowledge unique stressors of diverse communities to promote collective care

#### Focus Areas

- **Housing:** Affordability, stability, safety
- **Equitable Economies:** Food systems, good local jobs & working conditions, caregiving
- **Equity & Access to Care:** Information access and navigation across various institutions
- **Climate Health & Justice:** Air and water quality and climate change preparedness



**Partnerships and Collaborators:** Beth Israel Lahey Health, Mass General Brigham, North Suffolk Public Health Collaborative, Department of Dental Medicine and Oral Health at Cambridge Health Alliance, and the City of Somerville's American Rescue Plan Act Office  
**Contact Us to Join the Conversation:** [chihit@challiance.org](mailto:chihit@challiance.org) [www.challiance.org/community-health/health-improvement-team](http://www.challiance.org/community-health/health-improvement-team)

# Everett and Malden: Data Focus

## Community Characteristics

### Population

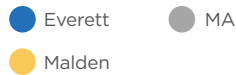
Everett: 46,118

Malden: 60,984

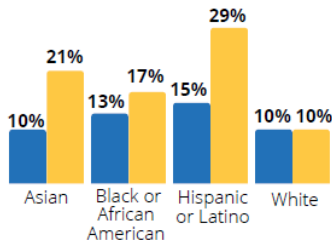
### Total Foreign-Born Population

Everett: 19,867

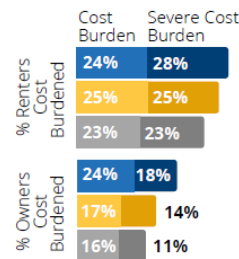
Malden: 26,005



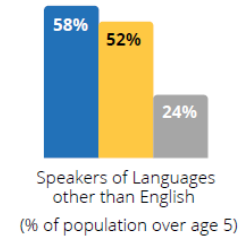
### Percent Below Poverty



### Housing Cost Burden



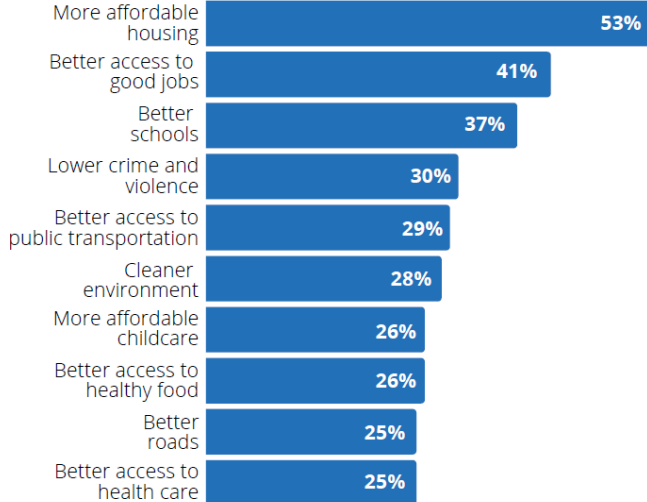
### Languages



## Survey Results Snapshot

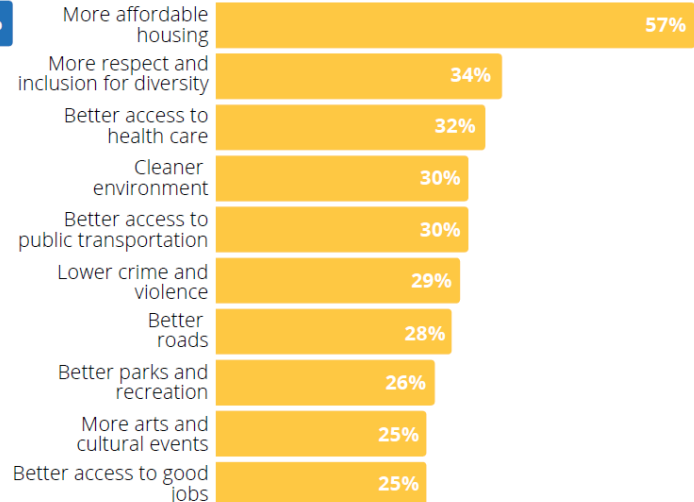
### Top Priorities for Improvement

120 participants



### Top Priorities for Improvement

197 participants



*"For immigrants, we advise each other on how to make this new place home. **We have strengths in our ability to organize.** We've created organizations and centers that keep on this tradition of service and helping."*

*"**Creating safe spaces** for adults to share experiences with youth, and let them know they're not alone; or for parents to learn about resources and opportunities. **It doesn't need to be labeled as mental health care.** We know the benefits of being in that space together include our mental health."*

*Describing the **conditions that promote health**: "To live in an environment where you don't feel discriminated against, where you feel welcome, where you can manage your life, your family life and community life in peace, with love."*

*Referring to not having to make choices between paying for rent versus medicine having health impacts: "**Having available resources** is a huge change. Based on that, you can have a good mental state and emotional health. **You can feel safe and secure, and have good health.**"*

**Data Collection & Analysis Partners:** ABCD, American Association for Arab Women, Bread of Life, City of Everett, City of Malden, Eliot Family Resource Center, Everett Community Growers, Everett Haitian Community Center, Everett Public Schools, Everett Youth Worker's Network, Housing Families Inc., Joint Committee for Children's Healthcare in Everett, La Comunidad, Inc., LUMA, MaldenCORE, Malden Housing Authority, Malden's Promise, Malden Public Schools, Malden Senior Center, Malden Warming Center, Mystic Valley YMCA, YWCA of Malden, MA Senior Action Council, Mystic Valley Elder Services, TEASA